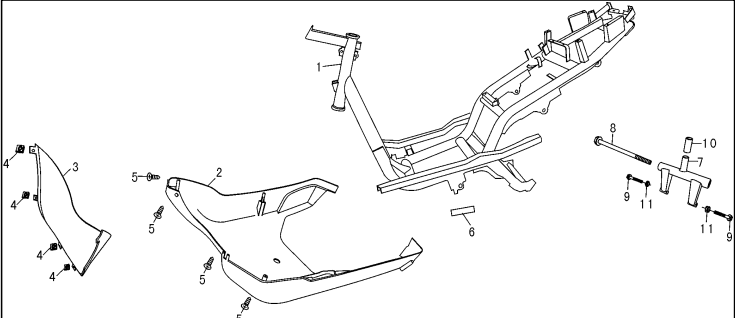
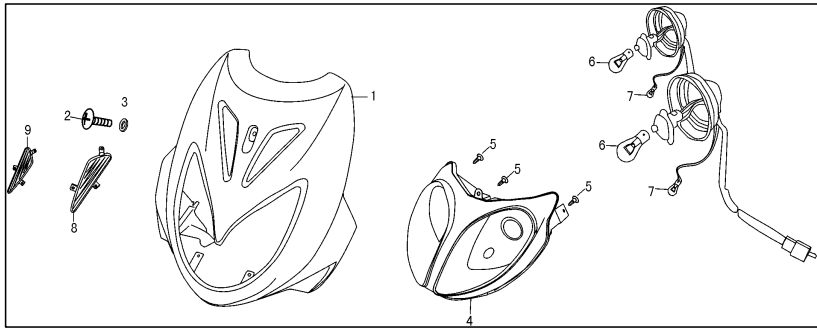
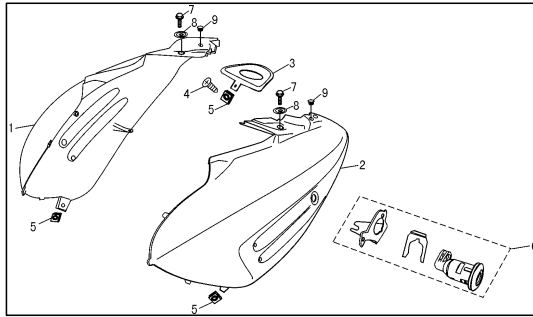
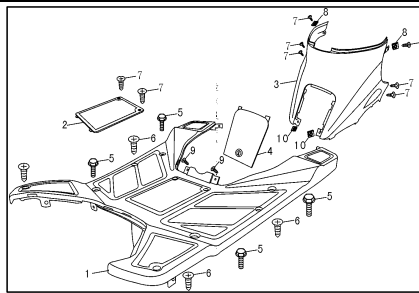


## LX50QT-18 PARTS LIST

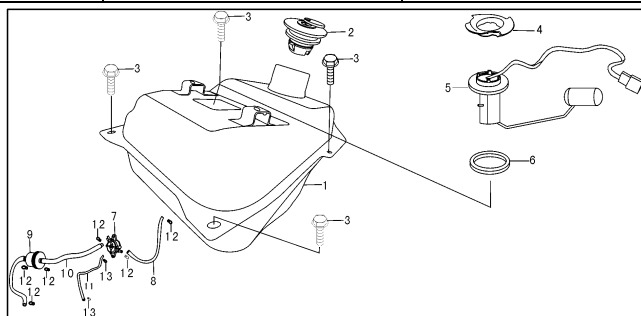
LX50QT-18 PARTS LIST				QTY	Pris kr
F-1		车架 BODY COMP., FRAME			
					
F1-1	501100-0370100	车架	BODY FRAME	1	2 446
F1-2	815271-0240010	车体腹板	PROTECTOR PLATE, ENGINE	1	658
F1-3	815271-0250010	车体腹板	PROTECTOR PLATE, ENGINE	1	37
F1-4	818311-0011830	卡夹4.2	NUT, CLIP, 4.2	4	10
F1-5	G04B13-LZ	自攻钉4.2×13	BOLT 4.2×13	4	15
F1-6	501071-0040010	车架铭牌	NAMEPLATE, FRAME	1	16
F1-7	501200-0300100	发动机托架	BRACKET, ENGINE	1	298
F1-8	912107-0011830	吊架轴M10×180	BOLT, HEX., M10×180	1	29
F1-9	SB1055-6LZ	法兰面螺栓M10×55	BOLT, FLANGE, M10×55	2	28
F1-10	501271-0050010	发动机托架胶垫	WASHER, ENGINE BRACKET	2	19
F1-11	MD1000-6LZ	自锁螺母M10	NUT, LOCK, M10	2	12
F-2		前面板、前照灯 PANEL, FRONT/HEADLIGHT ASSY.			
					
F2-1	810000-0400010	前面板	PANEL, FRONT	1	991
F2-2		十字大盘头螺钉M6×16	SCREW, PAN, M6*16	1	-
F2-3	912414-0041830	平垫Φ6×Φ18	WASHER Φ6×Φ18	1	0
F2-4	314000-0520010	前照灯	HEADLIGHT ASSY.	1	1 332
F2-5	G04B16-LZ	自攻钉4.2×16	SCREW, TAPPING, 4.2*16	3	22
F2-6		前照灯灯泡	BULB, FRONT HEADLIGHT	2	79
F2-7		前位置灯灯泡	BULB, HEADLIGHT POSITION	2	40
F2-8	810300-0190010	前面板装饰盖(左)	DECORATION COVER, FR. (L)	1	39
F2-9	81300-0200010	前面板装饰盖(右)	DECORATION COVER, FR. (R)	1	39
F-3					



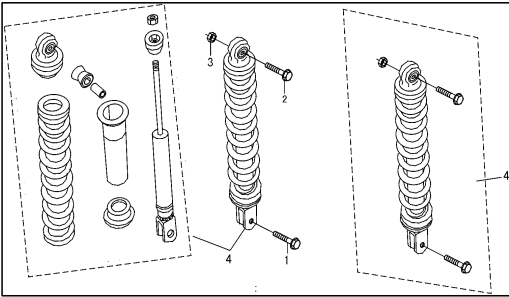
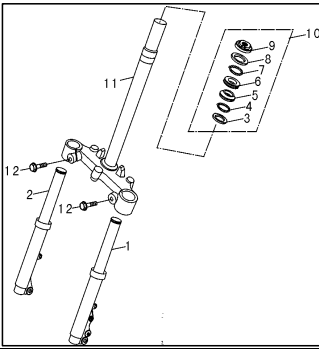
F3-1	816300-0310010	右尾罩	COVER, R. TAIL	1	525
F3-2	816200-0310010	左尾罩	COVER, L. TAIL	1	525
F3-3	816400-0190010	尾盖	COVER, TAIL	1	185
F3-4	G04B13-LZ	自攻钉4.2×13	SCREW, TAPPING, 4.2*13	1	21
F3-5	818311-0011830	卡夹4.2	NUT, CLIP, 4.2	3	21
F3-6	914000-0480010	座垫锁组件	KEY, SEAT LOCK	1	517
F3-7	SB0612-6LZ	法兰面螺栓M6×12	BOLT, FLANGE, M6*12	2	22
F3-8	912414-0110070	平垫Φ6.5×Φ27	WASHER Φ6.5×Φ27	2	13
F3-9	816403-0010010	尾盖孔盖	RUBBER COVER, TAIL COVER	2	26
F-4					

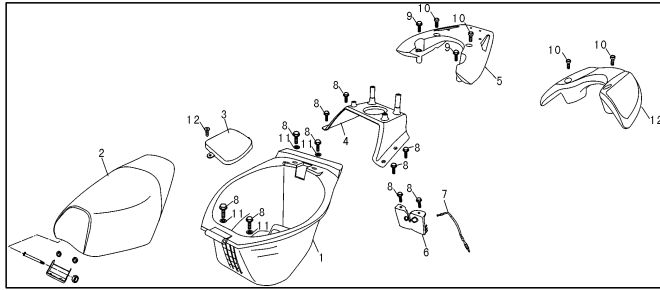


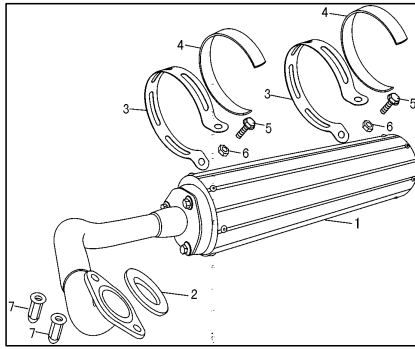
F4-1	815201-0370010	脚踏底板	BOARD, FOOTREST	1	219
F4-2	815203-0280010	电瓶盖板	COVER, BATTERY	1	39
F4-3	814500-0400010	杂物箱前罩	FR. COVER, LUGGAGE CASE	1	198
F4-4	815175-0150010	杂物箱前罩小盖	SMALL COVER, FRONT LUGGAGE CASE	1	39
F4-5	SB0616-6LZ	法兰面螺栓M6×16	BOLT, FLANGE, M6*16	4	22
F4-6	G04B16-LZ	自攻钉4.2×16	SCREW, TAPPING, 4.2×16	4	21
F4-7	G04B13-LZ	自攻钉4.2×13	SCREW, TAPPING, 4.2×13	8	21
F4-8	818311-0011830	卡夹4.2	NUT, CLIP, 4.2	2	21
F4-9	G04H13-LZ	自攻钉4.8×13	SCREW, TAPPING, 4.8×13	2	21
F-5					



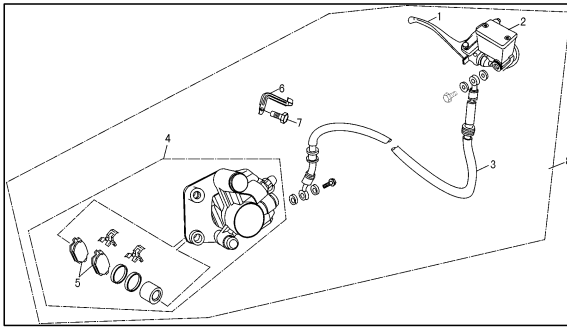
F5-1	801000-0260100	油箱	TANK COMP., FUEL	1	392
F5-2	804000-0030020	油箱盖	CAP, FUEL TANK	1	49
F5-3	SB0612-6LZ	法兰面螺栓M6×12	BOLT, FLANGE, M6*12	4	22

F5-4	323502-0010010	油位传感器卡子	CLIP, FUEL SENSOR	1	-
F5-5	323500-0250010	油位传感器	FUEL SENSOR UNIT	1	75
F5-6	323501-0010010	油位传感器胶圈	RUBBER, FUEL SENSOR UNIT	1	-
F5-7	803000-0010010	油开关	COCK, FUEL	1	100
F5-8	801086-0080010	油管Φ8.5×Φ4.5	TUBE, FUEL Φ8.5×Φ4.5	1	27
F5-9	113173-0010010	燃油过滤器	STRAINER COMP., FUEL	1	29
F5-10	801087-0080010	油管2Φ7.5×Φ3.5	TUBE, FUEL 2Φ7.5×Φ3.5	2	23
F5-11	801086-0080010	负压管Φ8.5×Φ4.5	TUBE, NEGATIVE Φ8.5×Φ4.5	2	-
F5-12	801088-0010010	钢丝夹Φ8	CLIP, TUBE Φ8	6	24
F5-13	801088-0020010	钢丝夹Φ6.5	CLIP, TUBE Φ6.5	2	24
F-6	后减震 SHOCK ABSORBER ASSY., RR.				
					
F6-1	SB0832-6LZ	法兰面螺栓M8×32	BOLT, FLANGE, M8×32	2	24
F6-2	SB1040-6LZ	法兰面螺栓M10×40	BOLT, FLANGE, M10×40	2	27
F6-3	MD1000-6DL	自锁螺母M10	NUT, LOCK, M10	2	27
F6-4	506000-0210020	后减震器L=270	SHOCK ABSORBER ASSY. RR. L=270	2	*****768
F-7	方				
					
F7-1	505100-0150260	左前减震器	FORK ASSY., L. FR.	1	760
F7-2	505200-0140260	右前减震器	FORK ASSY., R. FR.	1	760
F7-3	611009-0070010	调整螺母	NUT, ADJUSTING	1	-
F7-4	611303-0070010	上轴承挡圈	CIRCLIP, STEERING TOP CONE	1	-
F7-5	611306-0070010	保持架	RETAINER, STEERING STEM BEARING	1	-
F7-6	611301-0070010	上轴承座圈	RACE, STEERING TOP CONE	1	-
F7-7	611302-0070010	下轴承座圈	RACE, STEERING BOTTOM CONE	1	-
F7-8	611307-0070010	保持架2	RETAINER2, STEERING STEM BEARING	1	-
F7-9	611304-0070010	下轴承挡圈	CIRCLIP, STEERING BOTTOM CONE	1	-
F7-10	611300-0070010	方向轴承	BEARING, STEERING STEM	1	*****210
F7-11	611000-0200100	方向柱	STEM COMP., STEERING	1	674
F7-12	SB1030-6LZ	法兰面螺栓M10×30	BOLT, FLANGE, M10×30	2	26
F-8	座垫、杂物箱 SEAT COMP., / CASE, LUGGAGE				

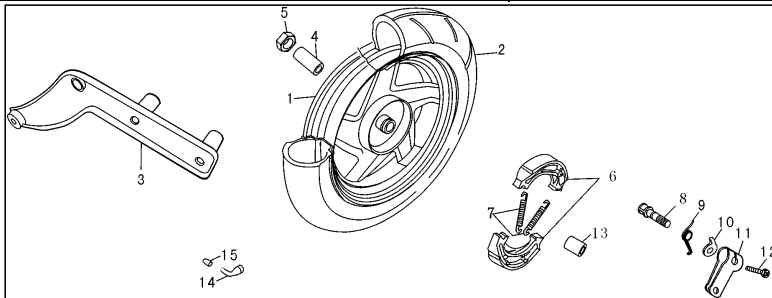
					
F8-1	815100-0300010	杂物箱	CASE, LUGGAGE (PP BLACK)	1	219
F8-2	701100-0450010	主座垫	SEAT COMP., DOUBLE	1	690
F8-3	815172-0330010	杂物箱保养盖	COVER, LUGGAGE CASE (PP BLACK)	1	21
F8-4	702077-0050010	载物架连接支架	CONNECTING	1	235
F8-5	702100-0344050	后载物架	LUGGAGE CARRIER ASSY., RR.	1	690
F8-6	503000-0220070	座垫锁止机构	LOCK COMP., SEAT	1	86
F8-7	609000-0010010	座垫拉索L=260	CABLE, SEATL=260	1	39
F8-8	SB0612-6LZ	法兰面螺栓M6×12	BOLT, FLANGE, M6×12	10	22
F8-9	SB0840-6LZ	法兰面螺栓M8×40	BOLT, FLANGE, M8×40	2	22
F8-10	D00835-6BZ	内六角圆柱螺钉M8×35	SCREW M8×35	2	-
F8-11	912414-0031830	平垫Φ6×Φ12	WASHER Φ6×Φ12	4	0
F8-12	702100-0324050	后载物架	LUGGAGE CARRIER ASSY., RR	1	392
F-9	前轮 FR. WHEEL				
					
F9-1	MD1200-6DL	自锁螺母M12	NUT, LOCK, M12	1	25
F9-2	410000-0150100	计速器	GEAR BOX ASSY., SPEEDOMETER	1	118
F9-3	C01030-DL	深沟球轴承	BEARING, RADIAL BALL	2	78
F9-4	912414-0081830	平垫Φ12	WASHER Φ12	1	21
F9-5	401102-0020010	前轮内衬套	COLLAR, FR. WHEEL	1	-
F9-6	401104-0020010	前轮油封	OIL SEAL, FR. WHEEL	1	-
F9-7	409001-0090010	碟刹盘	DISK, FR. BRAKE	1	-
F9-8	D30830-6LZ	碟刹盘螺栓M8×30	BOLT, BRAKE DISK, M8×30	3	24
F9-9	912202-0110020	前轮右轴套	COLLAR, FR. WHEEL SIDE, RH.	1	21
F9-10	912101-0110020	前轮轴M12×228	AXLE, FR. WHEEL, M12×228	1	63
F9-11	401100-0210010	前轮毂	HUB, FR. WHEEL	1	569
F9-12	402102-0010010	气门芯	VALVE, TIRE, FR.	1	49
F9-13	402101-0010010	气门芯帽	CAP, VALVE	1	-
F9-14	402000-0110010	前轮胎	GEAR BOX ASSY., SPEEDOMETER	1	1 301
F-10					



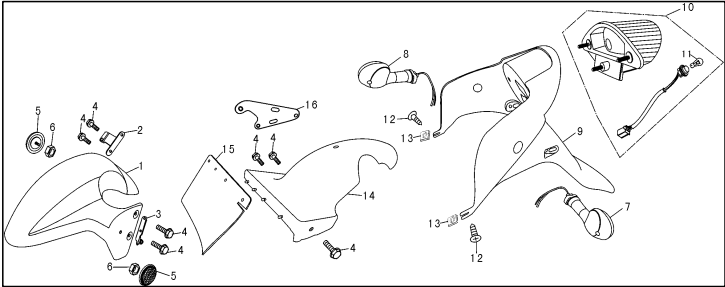
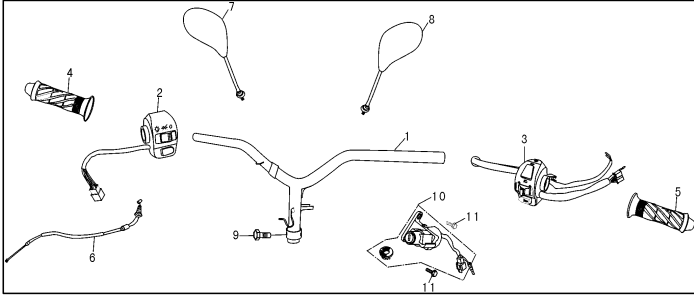
F10-1	117000-0500220	消声器	MUFFLER COMP., EX	1	1 176
F10-2	117073-0010010	消声器石棉垫	GASKET, EX. PIPE	1	-
F10-3		消声器固定卡	CLIP, EXHAUST MUFFLER	2	-
F10-4		消声器固定卡胶垫	RUBBER, FIXING, EXHAUST MUFFLER	2	-
F10-5	SB0625-6LZ	法兰面螺栓M6×25	BOLT, FLANGE, M6×25	2	22
F10-6	MD0600-6LZ	自锁螺母M6	NUT, LOCK, M6	2	21
F10-7	M00630-6LZ	盖形螺母M6×30	NUT, CAP, M6×30	2	26
F-11					

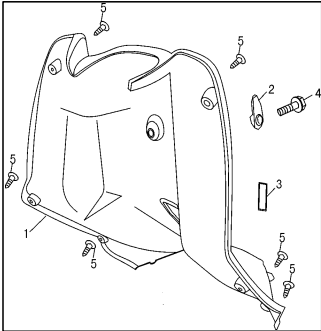
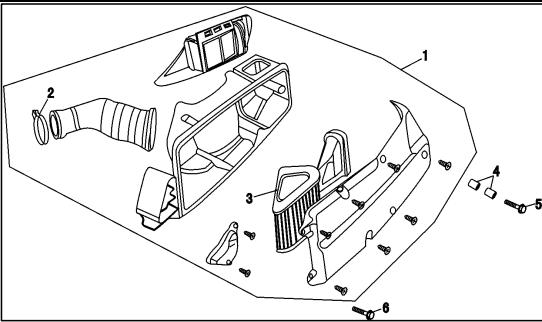
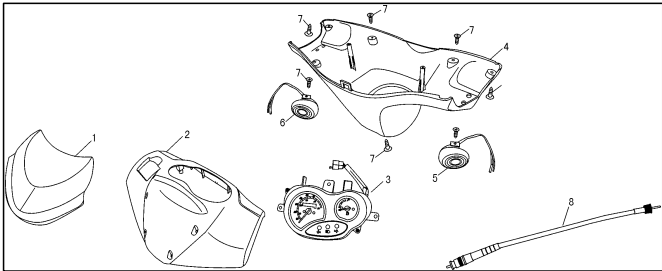


F11-1	409103-0090100	前碟刹手柄	HANDLE LEVER, FR. DISK BRAKE	1	89
F11-2	409100-0020260	前碟刹上泵	CYLINDER ASSY., FR. DISK BRAKE	1	376
F11-3	409300-0100010	前碟刹软管	HOSE COMP., FR. DISK BRAKE	1	152
F11-4	409200-0060010	前碟刹下泵	CALIPER ASSY., FR. BRAKE	1	705
F11-5	409202-0050010	前碟刹摩擦片	PAD SET, FR. DISK BRAKE	2	78
F11-6	409310-0030010	前碟刹软管管夹	CLAMP	1	152
F11-7	SB0612-6LZ	法兰面螺栓M6×12	BOLT, FLANGE, M6*12	1	22
F11-8	409000-0570100	前碟刹总成	BRAKE ASSY, FRONT DISC	1	800
F-12	后轮 REAR WHEEL ASSY.				

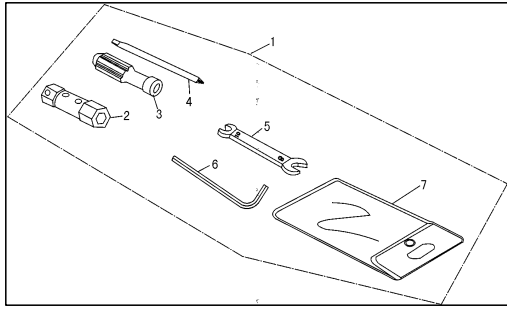


F12-1	403100-0190010	后轮毂	HUB, RR. WHEEL	1	569
F12-2	402000-0120010	后轮胎	TYRE, RR. WHEEL	1	849
F12-3	506071-0170100	后减震连接板	PLATE, REAR SHOCK ABSORBER CONNECT	1	141
F12-4	912204-0010070	后轮右衬套	COLLAR, RR. WHEEL, RH.	1	-
F12-5	MD1600-6LZ	自锁螺母M16	NUT, LOCK, M16	1	22

F12-6	407200-0010010	后制动蹄块	SHOE SET, RR. BRAKE	1	178
F12-7	407202-0010050	后制动蹄块弹簧	SPRING, RR. BRAKE SHOE	1	15
F12-8	407101-0010060	后制动凸轮轴	CAM, RR. BRAKE	1	-
F12-9	407005-0010060	后制动臂回位弹簧	SPRING, RR. BRAKE ARM RETURN	1	33
F12-10		指示盘	PLATE, INDICATION	1	-
F12-11	407002-0010060	后制动臂	ARM, RR. BRAKE	1	24
F12-12	SB0630-6DL	法兰面螺栓M6×30	BOLT, FLANGE, M6*30	1	22
F12-13	912203-0010070	后轮左衬套	COLLAR, RR. WHEEL, LH.	1	-
F12-14	402101-0010010	气门芯	VALVE, TYRE, RR.	1	-
F12-15	402101-0010010	气门芯帽	CAP, FR. TYRE CHARGE VALVE	1	-
F-13	前、后挡泥板 FRONT FENDER/REAR FENDER				
					
F13-1	806101-0110010	前轮挡泥板	FENDER, FR.	1	157
F13-2	806073-0020100	前挡泥板支架(右)	BRACKET, FRONT FENDER, R.	1	31
F13-3	806073-0010100	前挡泥板支架(左)	BRACKET, FRONT FENDER, L.	1	33
F13-4	SB0612-6LZ	法兰面螺栓M6×12	BOLT, FLANGE, M6*12	7	22
F13-5	310000-0260010	侧反光片	SIDE REFLECTOR	1	34
F13-6	M90600-6LZ	防滑螺母M6	NUT, M6	1	11
F13-7	318000-0110010	左后转向灯	WINKER, L. RR.	1	157
F13-8	319000-0110010	右后转向灯	WINKER, R. RR.	1	157
F13-9	807200-0270010	后挡泥板	FENDER, RR.	1	198
F13-10	315000-0490010	后尾灯	TAILLIGHT ASSY.	1	392
F13-11		后尾灯灯泡	BULB, TAILLIGHT	1	-
F13-12	G04B13-LZ	自攻钉4.2×13	SCREW, TAPPING, 4.2*13	2	21
F13-13	818311-0011830	卡夹4.2	NUT, CLIP, 4.2	1	21
F13-14	807100-0210010	后挡泥内板	INNER PART, RR. FENDER	1	51
F13-15	402101-0010010	后挡水皮	RUBBER, RR. FENDER	1	-
F13-16	807073-0090100	后泥板支架		1	31
F-14	手把管部件、开关 HANDLE COMP., STEERING/SWITCH				
					
F14-1	601000-0320100	手把管部件	HANDLE COMP., STEERING	1	266
F14-2	324301-0110120	右闸把开关体	SWITCH RIGHT HANDLE	1	172
F14-3	324201-0050120	左闸把开关体	SWITCH LEFT HANDLE	1	196
F14-4	602200-0200010	加油器	GRIP COMP., THROTTLE	1	39
F14-5	602100-0180010	左手把胶	GRIP, L. HANDLE	1	39
F14-6	607000-0120010	油门拉索	CABLE COMP., THROTTLE	1	329

F14-7	902200-0180010	右后视镜	MIRROR, R. REARVIEW	1	159
F14-8	902100-0180010	左后视镜	MIRROR, L. REARVIEW	1	159
F14-9	SB1050-6LZ	法兰面螺栓M10×50	BOLT, FLANGE, M10*50	1	27
F14-10	914000-0480010	点火开关锁	SWITCH, IGNITION	1	517
F14-11	SB0612-6LZ	法兰面螺栓M6×12	BOLT, FLANGE, M6*12	1	22
F-15					
					
F15-1	815301-0240010	工具箱	BOX COMP. , UTILITY	1	204
F15-2	814073-0230010	头盔挂钩	HOOK, HELMET	1	34
F15-3	815303-0290010	钢号盖	COVER, FRAME SERIAL NUMBER PLATE	1	34
F15-4	SB0630-6LZ	法兰面螺栓M6×30	BOLT, FLANGE, M6*30	1	22
F15-5	G04B13-LZ	自攻钉4.2×13	SCREW, TAPPING, 4.2*13	6	22
F-16		空滤器 AIR CLEANER ASSY.			
					
F16-1	115000-0200010	空滤器	AIR CLEANER ASSY.	1	390
F16-2	115400-0010070	管箍	CLAMP, AIR CLEANER	1	-
F16-3	115300-0010010	滤芯	ELEMENT, AIR CLEANER	1	97
F16-4	912200-0041830	衬套φ6×φ9×10	COLLAR φ6×φ9×10	2	22
F16-5	SB0635-6LZ	法兰面螺栓M6×35	BOLT, FLANGE, M6×35	1	22
F16-6	SB0620-6LZ	法兰面螺栓M6×20	BOLT, FLANGE, M6×20	1	22
F-17		/COVER, METER			-
					
F17-1	809000-0200010	挡风板	WINDSHIELD	1	78
F17-2	812000-0330010	导流罩	FAIRING	1	141
F17-3	323000-1190010	仪表总成	METERS ASSY.	1	681
F17-4	812400-0340010	仪表壳	COVER, METER	1	69

F17-5	316000-0460010	左前转向灯	WINKER, FR., LH.	1	157
F17-6	317000-0390010	右前转向灯	WINKER, FR., RH.	1	157
F17-7	G04H13-LZ	自攻钉4.8×13	SCREW, TAPPING, 4.8×13	7	22
F17-8	622000-0010010	里程表软轴	CABLE COMP., SPEEDOMETER	1	329
F-18	主、侧支架、后制动拉索 MAIN STAND/SIDE STAND/CABLE COMP., RR. BRAKE				
F18-1	610000-0070010	后制动拉索	CABLE COMP., RR. BRAKE	1	129
F18-2	510200-0270100	侧支架	BAR COMP., SIDE STAND	1	86
F18-3	912413-0031830	单撑螺栓M10×24	BOLT, SIDE STAND PIVOT, M10*24	1	27
F18-4	510001-0040020	侧支架弹簧	SPRING, SIDE STAND	1	26
F18-5	MD1000-6DL	自锁螺母M10	NUT, LOCK, M10	1	23
F18-6	SB1025-6LZ	法兰面螺栓M10×25	BOLT, FLANGE, M10×25	2	25
F18-7	912206-0011830	双撑翻边衬套	COLLAR, MAIN STAND	2	22
F18-8	514001-0030020	主站架弹簧	SPRING, MAIN STAND	2	26
F18-9	514000-0310100	主站架	STAND COMP., MAIN	1	172
F18-10	514004-0010010	主站架减震胶垫	RUBBER, MAIN STAND	1	27
F-19	主电缆、电器件 HARNESS, WIRE/ELECTRICAL ELEMENTS				
F19-1	307000-0350010	主电缆	WIRE HARNESS	1	447
F19-2	301000-0020010	启动继电器	RELAY ASSY., STARTING	1	211
F19-3	306000-0020010	CDI点火器	CDI UNIT	1	289
F19-4	311000-0010010	闪光器	WINKER, RELAY ASSY.	1	95
F19-5	305000-0020010	点火线圈	COIL ASSY., IGNITION	1	298
F19-6	Sb0620	螺栓M6×20	BOLT M6×20	1	22
F19-7	SB0612-6LZ	法兰面螺栓M6×12	BOLT, FLANGE, M6×12	1	22
F19-8	312000-0020010	喇叭	HORN ASSY.	1	94
F19-9	303000-0130010	蓄电池	BATTERY	1	495
F19-10	SB0616-6LZ	法兰面螺栓M6×16	BOLT, FLANGE, M6×16	1	22
F19-11	302000-0020010	调压整流器	RECTIFIER COMP., REGULATE	1	241
F19-12	307700-0010010	过流保护器	PROTECTION DEVICE, CURRENCY	1	33
F-20	随车工具 TOOL SET				



F20-1	901100-0010010	随车工具组合	TOOL SET	1	42
F20-2	901104-0020010	• 套筒扳手	SOCKET WRENCH	1	28
F20-3	901108-0010018	• 起子手柄	HANDLE, SCREW DRIVER	1	25
F20-4	901102-0010010	• 两用起子	SCREW DRIVER	1	24
F20-5	901106-0010010	• 开口扳手	SPANNER	1	16
F20-6	901109-0010010	• 内六角扳手	SIX ANGLE WRENCH	1	25
F20-7	901101-0010010	• 工具袋	BAG, TOOL SET	1	24

